



Product Application

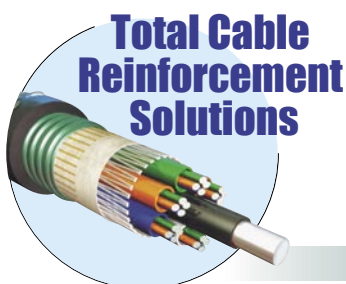
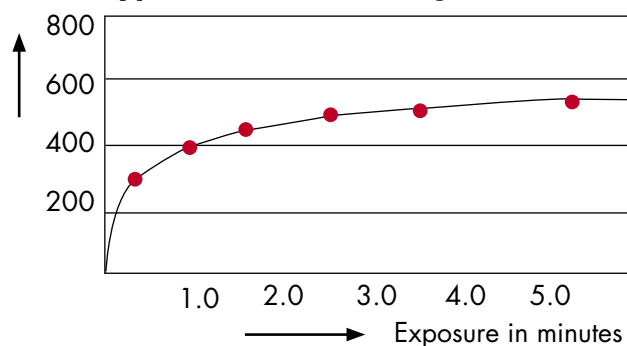
INDOFLEX™ WS has dual functionalities of very high strength & excellent water swellable characteristics. It is most suited for uni-tube, loose tube & slotted core cables & typically used as peripheral reinforcement in fibre optic cables along with FRP Rod & Semi-Rigid FRP Rods. It is introduced over the loose tube and the cable manufactured with it would be lower in diameter, lighter in weight with high degree of flexibility, excellent tensile strength & modulus performance along with protection against water damage. This product is a cost effective alternative to gels, greases & tapes, especially where dry cable is desirable.

Description

INDOFLEX™ WS is manufactured using E-glass fibre with proprietary resin systems to produce an innovative, value added reinforcement solution with superior water swelling properties. It has a special smooth, super absorbant coating to resist water penetration into fiber optic cables, saving it from water damages. This product is manufactured using an advanced water blocking coating technology, eliminating loose fibers or powder traces on the surface during cable production at very high speeds achieving excellent productivity and handling characteristics. It swells instantly on contact with water thereby sealing all the voids even in harsh & hostile environments and has a very high swell strength which is suitable to withstand higher water pressure important for highly sensitive optic fibers.

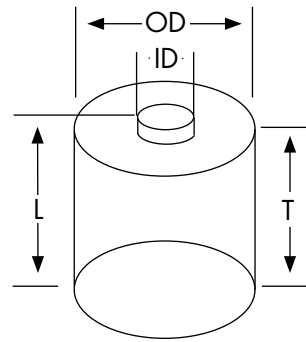
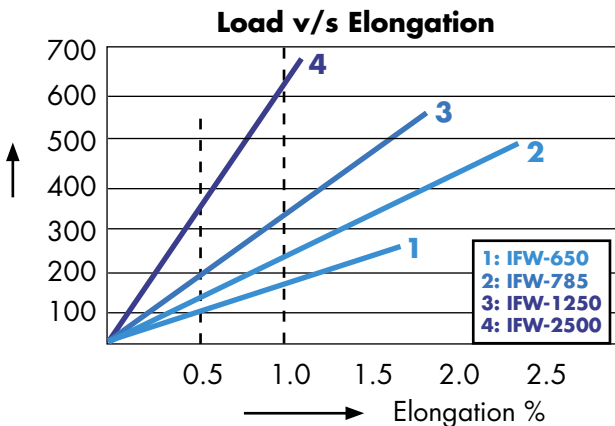
It has a very high strength to weight ratio resulting in light weight cables with utmost ease of handling. It is available in long continuous lengths with tex (gm/Km) ranging from 600 tex to 2400.

Typical Water Absorbing Performance



Typical Product Characteristics - Nominal Values

Water Blocking Grade		IFW-650	IFW-785	IFW-1250	IFW-2500	
Physical Properties	Unit	Value	Value	Value	Value	Test Method
Linear Density Tex	gm/Km	630	775	1260	2500	ASTM D - 578
Tensile Strength at Break	N	380	465	760	1520	ASTM D - 885
LASE @ 0.5% Elongation	N	80	105	160	313	ASTM D - 885
LASE @ 1.0% Elongation	N	170	224	334	654	ASTM D - 885
Modulus of Elasticity	N/mm ²	76500	76500	76400	76400	ASTM D - 885
Elongation at Break	%	3.5	3.5	3.5	3.5	ASTM D - 4963-94
Strand Width (Avg) (Dry)	mm	2.7	3.0	3.2	3.4	ASTM D - 885
Strand Thickness (Dry)	mm	0.16	0.20	0.26	0.30	ASTM D - 885
Water Absorption, 1.0 Minute	%	>400	> 400	> 400	>400	ASTM D - 570



Packaging	76280				94220				94280			
Outside Diameter (Pkg OD) mm	250				250				250			
Inside Diameter (Tube ID) mm	76				94				94			
Traverse (T) mm	254				204				254			
Tube Length (L) mm*	280				220				280			
Product (As Per TEX)	630	750	1225	2500	630	750	1225	2500	630	750	1225	2500
Max Length per pkg, kms.1	21.2	19.3	10.7	5.4	16.6	14.5	8.4	4.3	20.2	18.1	10.2	5.2
Tube Type (Rhino)	Card Board				Card Board				Card Board			
Max Weight per pkg, kgs.1	15.3	15.3	15.3	15.3	11.3	11.3	11.3	11.3	14.4	14.4	14.4	14.4
Carton / Pallet Nos. (Exports)	48				48				48			
Pallet Dimensions L x W x H	1143 x 867 x 127				1143 x 867 x 127				1143 x 867 x 127			
Carton / Pallet Nos. (Domestic)	45				54				45			
Pallet Dimensions L x W x H	915 x 867 x 127				915 x 867 x 127				915 x 867 x 127			

1. Length / weight per pkg may vary

Note: Other lengths are possible on request. Weight upto 20kg is possible for higher allowable OD

Limited Warranty: This product has been tested prior to dispatch and Indore gives warranty that tis free from any manufacturing defects.

However Indore disclaims any liabilities for incidental or consequential damages arising out of breach of this warranty or any implied warranty.

INDORE COMPOSITE PVT. LTD. [Cable Materials Div.]

Corporate & Marketing Office

Sethna, 4th Floor, 55, Maharshi Karve Road, Marine Lines, Mumbai - 400002. India

Tel: ++91-22-22090333. Fax: ++91-22-22088988. Website:www.indore.co.in

Manufacturing Sites

Plant 1: Pithampur, M.P. - 454775. India.

Plant 2: Umbergaon, GUJ. - 396171. India.